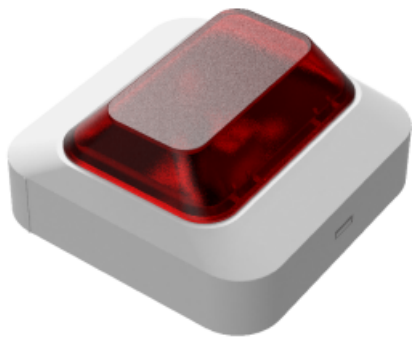


# REMOTE INDICATOR C9069L



## Features

- Designed with an top cover and a bottom cover, simple and convenient maintenance.
- Non-polarity, two-cables connection that ensures convenient installation and maintenance.



## Description

The C9069L Remote Indicator is a two-wire remote indicator . It can be used with our addressable detectors or conventional detectors. When the detector alarms, the Remote Indicator will be lit.Suitable for installing detectors on the ceiling. When a fire alarm occurs, the fire alarm information cannot be visually observed, the fire alarm signal of the detector is displayed in a visible position through the remote indicator.

Power supply	
Working voltage	DC5V (allowance: DC4V ~ 5V)
Working current	Standby current: 0mA ; Alarm current: 1mA~30mA
Wiring method	Non-polarity, two cables
Operating environment	Indoor, temperature: -10°C~+55°C;
Relative humidity	≤95% (40°C±2°C, without condensation)
Weight	30g
Dimensions	64×64×30mm(L x W x H)
Wiring Length	<30m